

Everspark

The long-lasting blinking buffer



Everspark is a super-resolution microscopy buffer that offers multicolor and stable fluorescence imaging on the long-term: prepare your samples one day and image them for up to 2.5 months.

Key features

1. Simplify your imaging workflow by imaging as many times as you want for 2.5 months without replacing the buffer

2. Multicolor (including green)

Compatible with green, red & far red dyes (JF646, JF549, AF647, CF647, DL550, CF568, DL650, CF680, SulfoCy5 and mEos2)

3. Ready to use

Can be used directly from the vial

4. Up to 6 months performance

Individualized packaging for optimal longevity

Microscopy techniques compatible:

- PALM
- MINIFLUX
- dSTORM
- HiLo & TIRF modalities



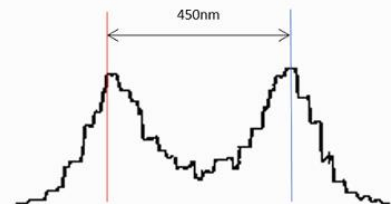
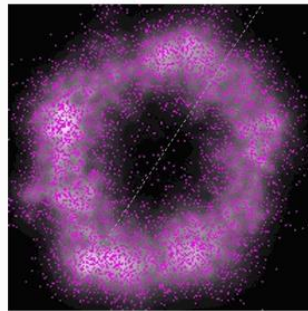
Created by Alencore from Nuclei Project

Results

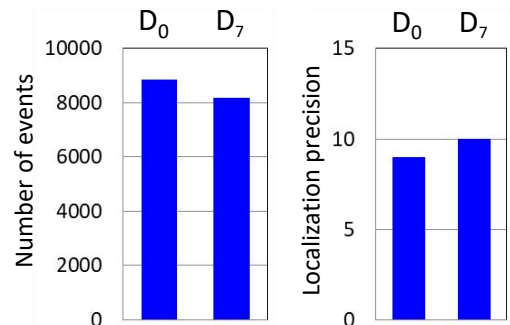
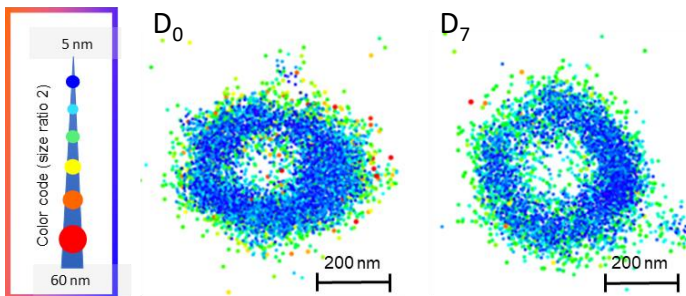
Donut-like structure of in-cellulo mature centrosome reconstructed after dSTORM imaging in Everspark buffer.

Each point is represented by its centroid (purple points) and its gaussian width (white). Intensity profil is displayed on the right with the measurement from peak to peak, in agreement with the size of the distal appendage cone. Labeling: Distal-appendages detected by immunofluorescence with AF647 in RPE-1 cells.

Image credit: Corentin Rousset, Karine Monier, CRCL, Lyon



Long-term dSTORM imaging with Everspark



Left: Two centrosomes imaged the same Day (D₀) and 7 days after mounting (D₇) on the same slide stored in the dark at 4°C. The typical 450 nm donut-like structure is visualised using a colour-coded scale encoded with the IGOR software, where each point appears as a function of its localisation precision (5 to 60 nm; inverted rainbow colour scale). Labeling: Distal-appendages detected by immunofluorescence with AF647 in RPE-1 cells. Right: The number of blinking events per centrosome and the median of the localisation precision in nm are presented for each series of 50,000 images recorded at D₀ and D₇ (left).

Image credit: Camille Fournieux, Karine Monier, CRCL, Lyon

Contact and website

